

SHIP DEPARTMENTS AND NAVIGATION

The crew of a ship is divided into different departments, each of which has certain responsibilities.

Deck: Captains, officers, and boatswains

Radio: officers and operators

Engine: engineers and electricians

Medical: doctors and nurses

Entertainment: cruise directors, hostesses, youth counselors, stage managers, musicians, disk jockey

Hotel: purser, shore excursion manager, secretaries, stewards, waiters, chefs, galley staff, bar and casino staff, bellboy, supervisors, laundrymen, beauticians, shopkeepers, photographers, printers, and even an upholsterer

VOCABULARY

Aft: Nearer the rear of a ship or aircraft

Anchor: A heavy object, usually a shaped iron weight with flukes, lowered by cable or chain to the bottom of the water to keep a ship or boat from drifting

Bilge: the lower part of the inside of a ship's hull

Boatswain: A ship's officer in charge of the deck crew, rigging, anchors and boats

Bow: The front, or forward part of a ship

Buoy: A floating object anchored in a body of water to warn of rocks or to mark a channel and often equipped with a bell or light

Bridge: A platform above the main deck of a ship from which it is controlled

Bulkhead: Any of the upright partitions separating parts of a ship for protection against leakage

Capstan: A spool-shaped cylinder on a ship around which cables are wound to hoist the anchor

Chart: Similar to a map; shows features important to the navigator

Compass: An instrument used for showing direction, it consists of a magnetic needle swinging freely on a pivot and pointing to magnetic north

Deck: A platform or roof over a ship's hold, serving as a floor

Fathom: A length of 6 feet used as a unit of measure for the depth of water

Galley: A ship's kitchen

Hull: The frame or main body of a ship

Keel: The main timber or steel piece extending along the entire length of the bottom of a ship

Knot: A unit of speed of one nautical mile an hour. (6,076.10ft.)

Lighter: A boat used chiefly in loading and unloading larger ships

Longshoreman: A person who works on the waterfront, loading and unloading ships

Pilot: A person licensed to direct or steer ships into or out of a harbor or through difficult waters

Port: 1) a harbor; 2) a city or town with a harbor where ships can load and unload passengers or cargo; 3) the left-hand side of a ship as one faces the bow

Purser: On a passenger vessel, the ship officer in charge of accounts, freight, tickets, etc.

Radar: A system or device that uses transmitted and reflected radio waves for detecting an object and determining its direction, distance, height or speed

Rudder: A broad, flat, movable piece of wood or metal hinged vertically at the stern of a boat or ship, used for steering

Starboard: The right-hand side of a ship as one faces the bow

Stateroom: A private cabin, or sleeping room, on a ship

Stevedore: Another name for a longshoreman

Underway: Not at anchor, or moored or aground

Voyage: A journey by water

THE PORT OF JUNEAU IS RICH WITH HISTORY

With its location on Gastineau Channel, Juneau's natural harbor has been a major seaport for over a hundred years.

Captain George Vancouver, sailing from England in 1793, was one of the first Europeans to sail through Southeast Alaska. In the years after his ships left, numerous vessels visited Southeast shores to trade for furs with the local Tlingit and Haida.

The founding of Juneau was directly related to the discovery of gold in 1880. Almost immediately, makeshift wharves were erected along the waterfront to accommodate the boats bringing prospectors and miners. These early adventurers were soon followed by fur traders and shopkeepers.

In 1885, the newly organized Alaska Steamship Company began regular service to Juneau—carrying passengers, freight, supplies and mail. As Juneau grew, the need for expanded transportation became obvious and additional steamship lines inaugurated service to the thriving mining community. Before long, our busy downtown docks also welcomed fishing boats, log ships, ferries, military vessels and private yachts.

While our visitor industry has grown considerably over the past few years, tourism has always been a part of Juneau's economy. Intrigued by the Gold Rush, recreational travelers began making round-trip journeys to Southeast Alaska in the 1880's. By 1896 many steamers had begun regular visits that often included a glimpse at Glacier Bay. When these early steamship travelers visited Southeast, the local Tlingit Indians often greeted them on the docks, offering traditional Native art as souvenirs of their trip North.

Alaska's traditional resource-based industries – fishing, mining, logging and oil extraction, while still vital to the state's economy, are not growing as rapidly as they once were. But our spectacular scenery continues to attract visitors to our shores. To sustain and grow our economy, the people who work in our visitor industry sell the experience of seeing and enjoying the wonder and beauty of Alaska.

In addition to the independent travelers who visit our communities via airplanes, state ferries, private boats, cars and RVs, cruise ships bring people from all over the United States and the world for a once-in-a-lifetime look at this beautiful part of Alaska.

When cruise passengers and crew members step off the ships and onto the streets of Juneau, they become our guests and valuable contributors to our local economy. Cruise ship companies pay to anchor in our harbor and use our docks and when cruise visitors purchase local tours, transportation, food and souvenirs, they also pay our City sales tax—a valuable source of income for our local government. These revenues translate into snow removal, street-paving, teachers' salaries and police and fire services for all of our residents twelve months a year.

And just like a hundred years ago, the port of Juneau bustles with the excitement of travel and commerce all summer long.

SHIPS & SUMMER

SHIPS of SUMMER

DEAR STUDENTS,
Holland America Line, Norwegian Cruise Lines, Princess Cruises and Royal Caribbean International are happy to welcome you aboard one of Juneau's "Ships of Summer."

Some of the ships you will tour with your class—and then see all summer long—have very glamorous names... Diamond Princess, Westerdam, Vision of the Seas and Norwegian Sun. We think it's appropriate that visitors to such a majestic state journey in such a grand manner.

In this newsletter, we've put together some useful information and vocabulary to prepare you for your cruise ship tour. We expect lots of good questions about the cruise industry and the ship you visit. We hope you learn many interesting facts about Juneau's Ships of Summer and their place in our community.

Enjoy your tour!

ABOUT OUR SHIPS

Every cruise ship is different. But all ships built in the last few years are equipped with state-of-the-art navigation and sewage treatment systems and safety equipment.

Sea water distillation plants which can produce up to 200,000 gallons of fresh water daily and comprehensive recycling and garbage treatment systems are also common features of modern cruise ships.

The larger ships have 24-hour medical staffs and hospitals equipped to provide medical attention to passengers and crew members.

WHY CHOOSE TO CRUISE?

When sailing to Alaska, travelers can enjoy the scenery of coastal mountains and waterways. Sheltered from the weather, passengers can comfortably view bald eagles and migrating birds, watch for whales, seals and porpoises and photograph icebergs and glaciers.

For many travelers, the cruise ship itself is the destination. This ocean-going resort offers a wide range of experiences and wonderful features. On board, guests can swim, play games, join an

exercise group, enjoy fine dining and attend shows, classes, lectures and movies or plan the next day's sightseeing. Often the ships travel between ports at night while the passengers are sleeping. The days are then free for sightseeing and adventure.

A FLOATING CITY

Some cruise ships have as many as 1,340 passenger staterooms that have telephones, television and a refrigerator. By comparison, the Baranof Hotel in downtown Juneau has 194 rooms. In addition to staterooms, most cruise ships have:

- Observation lounge
- Swimming pool
- Sauna and hot tub
- Theater
- Restaurants
- Show lounge
- Special clubs for kids
- Gym
- Spa
- Beauty and barber salon
- Shopping arcade
- Cafe
- Pizzeria
- Card and game room
- Hospital
- Climbing wall
- Library
- Internet Café
- Casino

Cruise ships offer safe and comfortable travel for physically challenged passengers and every cruise ship has motorized lifeboats and inflatable life rafts.

FUN FACTS

There's enough electrical power on board a cruise ship to supply an industrial town of 100,000 inhabitants.

The anchors on the large ships weigh 180 tons each.

The Sun and Dawn Princess ships each carry 174 tons of entertainment equipment – pianos, drums, sound systems, costumes and props.

EVERY DAY, A DIFFERENT PLACE

In one week's time, travelers to Alaska can visit Ketchikan, Juneau, Glacier Bay and Skagway before heading back to Vancouver, B.C. or Seattle. On a different itinerary, travelers can visit Wrangell, Petersburg, Sitka, Haines or

Hoonah or sail up north as far as Seward or Whittier to visit the Interior of Alaska.

In Juneau, the ships tie up at one of our docks or anchor in the harbor, usually for an entire day. When the ship is in port many passengers take advantage of local sightseeing, cultural attractions and adventure activities. Because Juneau provides visitors with a long list of tourist attractions, it is Alaska's second most visited community. As a cruise destination, Juneau ranks in the top ten in worldwide popularity.

LOOKING FOR SOMETHING TO DO IN JUNEAU? HOW ABOUT...

- A guided tour
- Flightseeing over the Juneau icefield
- Fishing
- Hiking
- Biking
- Kayaking
- Canoeing
- Mendenhall Glacier Visitor Center
- Watch the salmon spawn at Salmon Creek or near the glacier
- Float the Mendenhall River in a raft
- DIPAC fish hatchery
- Alaska State Museum
- Juneau Douglas City Museum
- Downtown Juneau walking tour
- Ride the Mt. Roberts Tram
- Whale watching
- Free concert in Marine Park
- Golf
- AJ Mine Tour
- Zip Line
- Dine at the Salmon Bake
- Berry picking
- Dog sledding
- Glacier Gardens
- Steamboat harbor cruise
- Floatplane to wilderness lodge
- Shop for souvenirs
- Alaskan Brewery
- Tour the Capitol building
- Scuba diving
- Walk on the wetlands
- Helicopter ride to a glacier
- Pan for gold

DID YOU KNOW?

All ships used for international trade and transportation are called merchant ships.

Most ships are powered by diesel engines, though several

newer ships are propelled by gas turbine engines. Cruising speed of a large cruise ship is about 22 knots. (approximately 25 m.p.h.)

Naval architects design the hull, superstructure and internal layout of the ship.

Marine engineers design the propulsion system.

Cruise lines operate in all parts of the world, the most popular being the Caribbean, Mediterranean, Mexico and Alaska.

An "around-the-world" cruise takes about 90 days.

IS A SUMMER JOB OR CAREER IN TOURISM IN YOUR FUTURE?

Visitors to Juneau rely on the experience, knowledge and friendliness of over 1,600 local residents who comprise our tourism workforce. And every summer, hundreds of Juneau's high school and college students join local full-time tourism professionals to provide the best experience possible for visitors.

Before you know it, you too will be looking for a summer job. Whenever you are ready, we will be here to help you develop your interpersonal skills and work ethic and earn money for college or future travel.

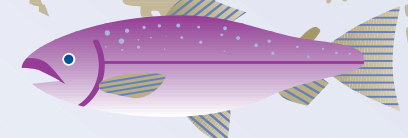
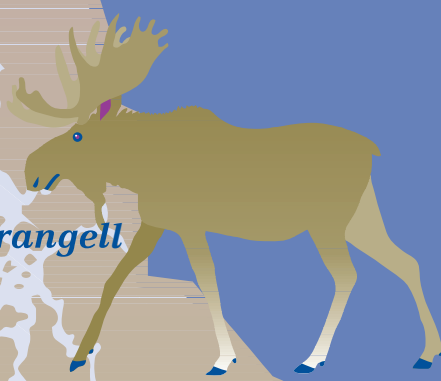
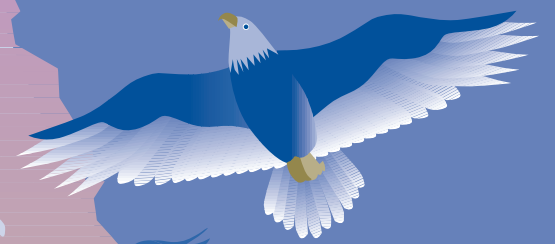
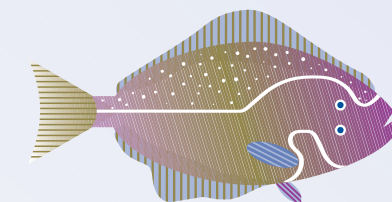
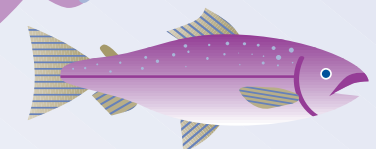
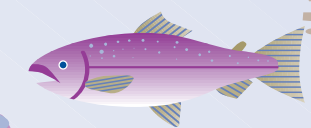
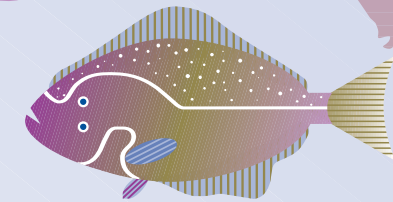
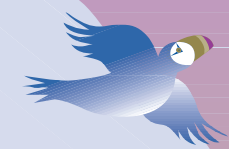
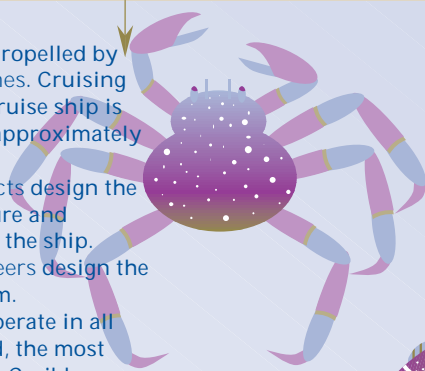
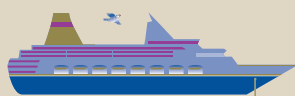


Begun in 1997, Tourism Best Management Practices (TBMP) minimize the impacts of tourism in a manner which addresses both resident and industry concerns.

Have you noticed the TBMP logo on tour busses, vans and other tourism-related vehicles? The TBMP program is a cooperative effort of Juneau tour operators, cruise lines, transportation providers and the City and Borough of Juneau.

The cruise lines and local tour operators are grateful for the opportunity to share Juneau with visitors and will continue working hard to make tourism work for everyone.

CRUISING ALASKA'S INSIDE PASSAGE



Haines Skagway

Glacier Bay

Hoonah

Juneau

Sitka

Petersburg

Wrangell

Ketchikan